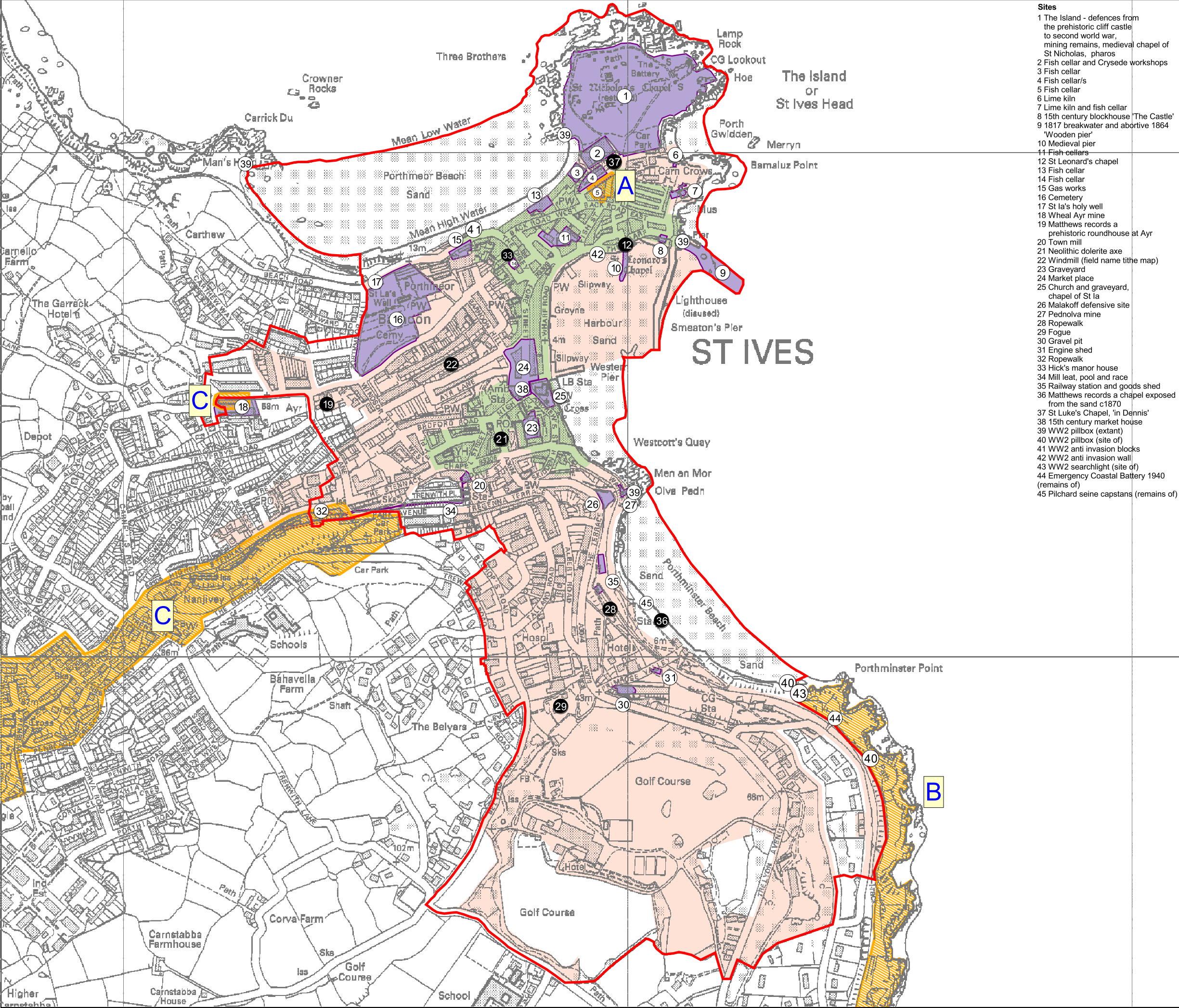


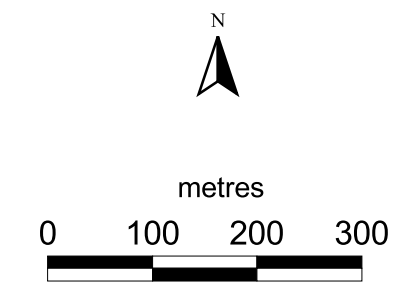
Figure 6.
Archaeological potential



- Sites**
- 1 The Island - defences from the prehistoric cliff castle to second world war, mining remains, medieval chapel of St Nicholas, pharos
 - 2 Fish cellar and Crysede workshops
 - 3 Fish cellar
 - 4 Fish cellar/s
 - 5 Fish cellar
 - 6 Lime kiln
 - 7 Lime kiln and fish cellar
 - 8 15th century blockhouse 'The Castle'
 - 9 1817 breakwater and abortive 1864 'Wooden pier'
 - 10 Medieval pier
 - 11 Fish-cellars
 - 12 St Leonard's chapel
 - 13 Fish cellar
 - 14 Fish cellar
 - 15 Gas works
 - 16 Cemetery
 - 17 St Ia's holy well
 - 18 Wheel Ayr mine
 - 19 Matthews records a prehistoric roundhouse at Ayr
 - 20 Town mill
 - 21 Neolithic dolerite axe
 - 22 Windmill (field name tithe map)
 - 23 Graveyard
 - 24 Market place
 - 25 Church and graveyard, chapel of St Ia
 - 26 Malakoff defensive site
 - 27 Pednolva mine
 - 28 Ropewalk
 - 29 Fogue
 - 30 Gravel pit
 - 31 Engine shed
 - 32 Ropewalk
 - 33 Hick's manor house
 - 34 Mill leat, pool and race
 - 35 Railway station and goods shed
 - 36 Matthews records a chapel exposed from the sand c1870
 - 37 St Luke's Chapel, 'in Dennis'
 - 38 15th century market house
 - 39 WW2 pillbox (extant)
 - 40 WW2 pillbox (site of)
 - 41 WW2 anti invasion blocks
 - 42 WW2 anti invasion wall
 - 43 WW2 searchlight (site of)
 - 44 Emergency Coastal Battery 1940 (remains of)
 - 45 Pilchard seine capstans (remains of)

Key

- Primary study area (1907 urban extent)
- Archaeological investigations
- A Couch's Factory, evaluation, building survey and minor excavation 1998
- B Porthminster, management survey 1993
- C Bank's Shaft, geotechnical investigation, field observation and site survey
- 1 Archaeological / Historic Site (historic extent known)
- 1 Archaeological / Historic Site (approximate location)
- approx medieval extent
- c.1907 urban extent



CCC licence No. 10019590. All material copyright (c) Cornwall County Council 2005. See Appendix 1 for GIS metadata information, definitions and suggestions for use.

Historic Environment Service
Environment & Heritage
Cornwall County Council
(01872) 323603
hes@cornwall.gov.uk

