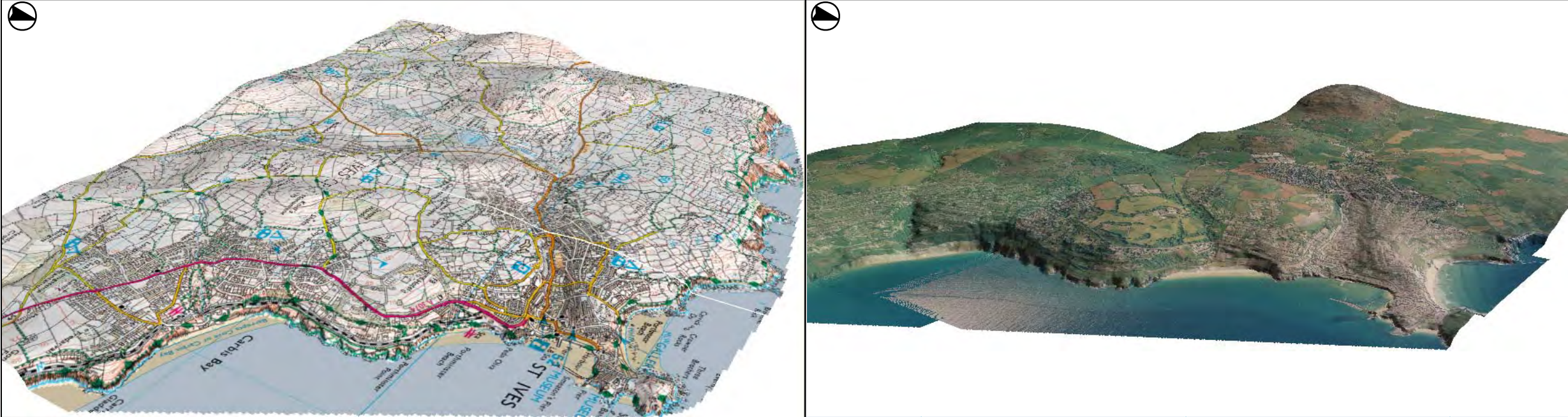
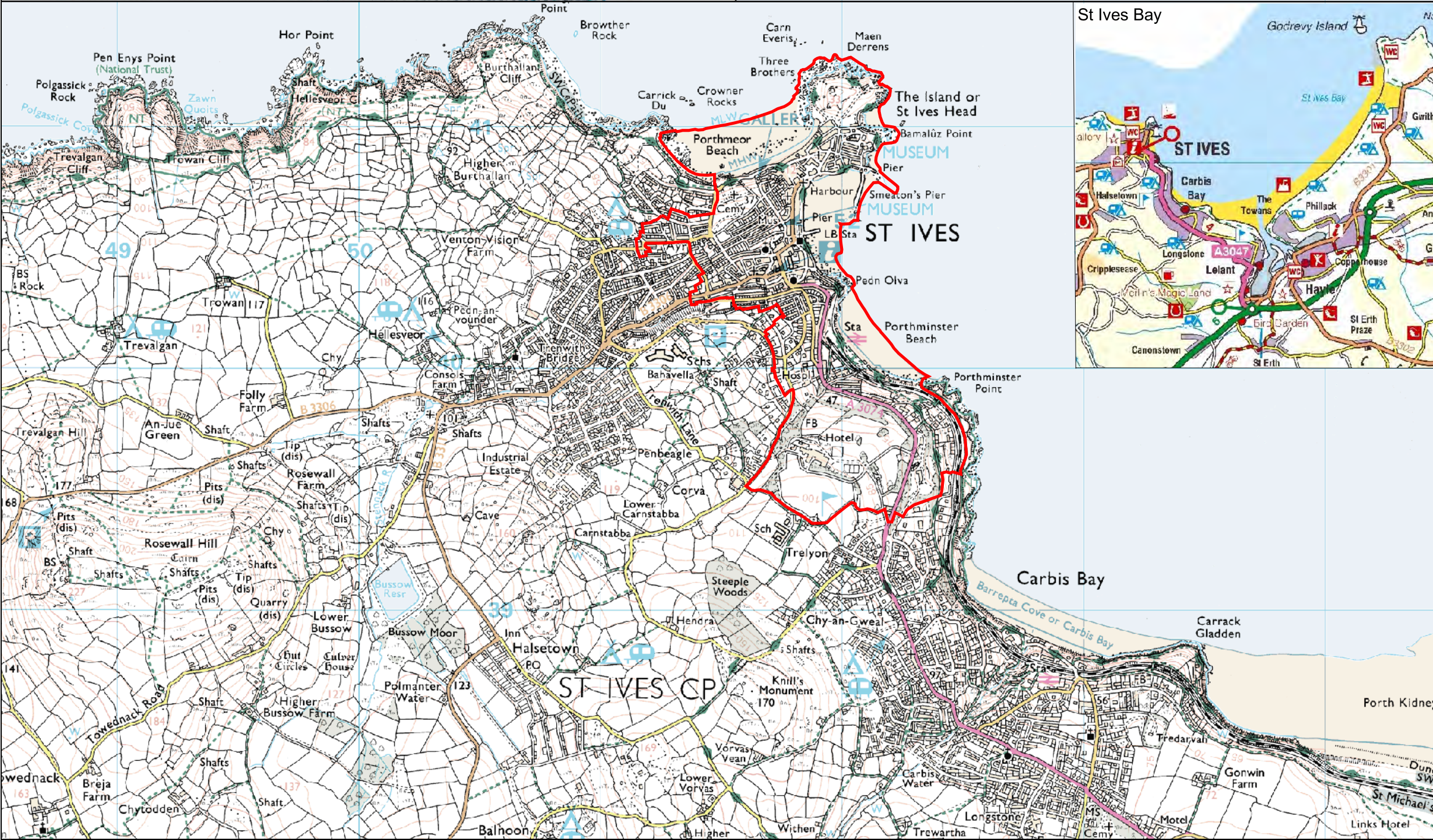
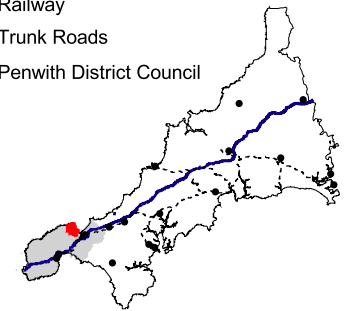


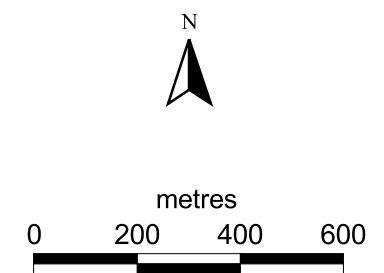
Figure 1. Location & topography



- St Ives
- CSUS settlements
- Railway
- Trunk Roads
- Penwith District Council



- Primary study area (1907 urban extent)



CCC licence No. 10019590. All material copyright (c) Cornwall County Council 2005. See Appendix 1 for GIS metadata information, definitions and suggestions for use.

Historic Environment Service
Environment & Heritage
Cornwall County Council
(01872) 323603
hes@cornwall.gov.uk

