

Character Area 2: Fore Street

This sheet summarises the comprehensive assessments of character and regeneration opportunities in sections 5 and 6 of the report.

Character summary

Fore Street is part of St Austell's key historic east – west routeway and its main commercial street. It is one of the few level streets in the town. A concentration of three-storey buildings set hard to the pavement edge give it a strong feeling of enclosure and urban density.

Regeneration opportunities

Reinforce the area's importance within the urban hierarchy

- Strengthen the importance of this street by recognising and enhancing its strong urban qualities and surviving historic fabric.
- Recognise its importance with high quality design in all future development.
- Enhance opes which connect main car parks and Aylmer Square to Fore Street - emphasise as entrance points to this important street.

Repairing tears in the urban fabric

- When redevelopment opportunities occur, reinstate the rhythm and sense of enclosure created by historic narrow plots and three storey buildings, with strong vertical emphasis.
- Shop front scheme to recognise and restore good surviving historic fabric and enhance the streetscape with modern frontages that better respect the buildings they are set within.

Revitalise the town centre

- More intensive use of upper storeys - LOTS scheme and additional retail provision.
- Timed delivery scheme to reinforce pedestrian priority



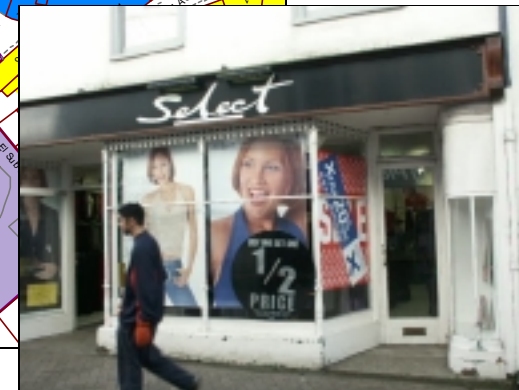
Recognise and enhance the strong urban qualities of Fore Street



Future development could reinstate urban enclosure by reinstating the building line at street and roof level



Enhance opes as entrance ways to 'announce' arrival in Fore Street



Potential for shop front scheme to enhance historic survivals and encourage modern frontages to better respect their buildings



Recognise and enhance quality buildings. Encourage future redevelopment to reassert key elements of the character of the historic streetscape

CSUS: ST AUSTELL

**Character area 2:
Fore Street**

- Character Area boundary
- Scheduled Monument
- Listed Building
- Other historic building
- Other historic site

Based on the Ordnance Survey 1:10,000 and Landline mapping with the permission of the Controller of Her Majesty's Stationary Office (c) Crown Copyright. Unauthorised reproduction infringes Crown Copyright and may lead to prosecution or civil proceedings. CCC licence No. LA076538.

All material copyright (c) Cornwall County Council 2002.



Cornwall Archaeological Unit
Historic Environment
Cornwall County Council
(01872) 323603
cau@cornwall.gov.uk

