

**Character Area 8: Towan Head and Fistral Beach**

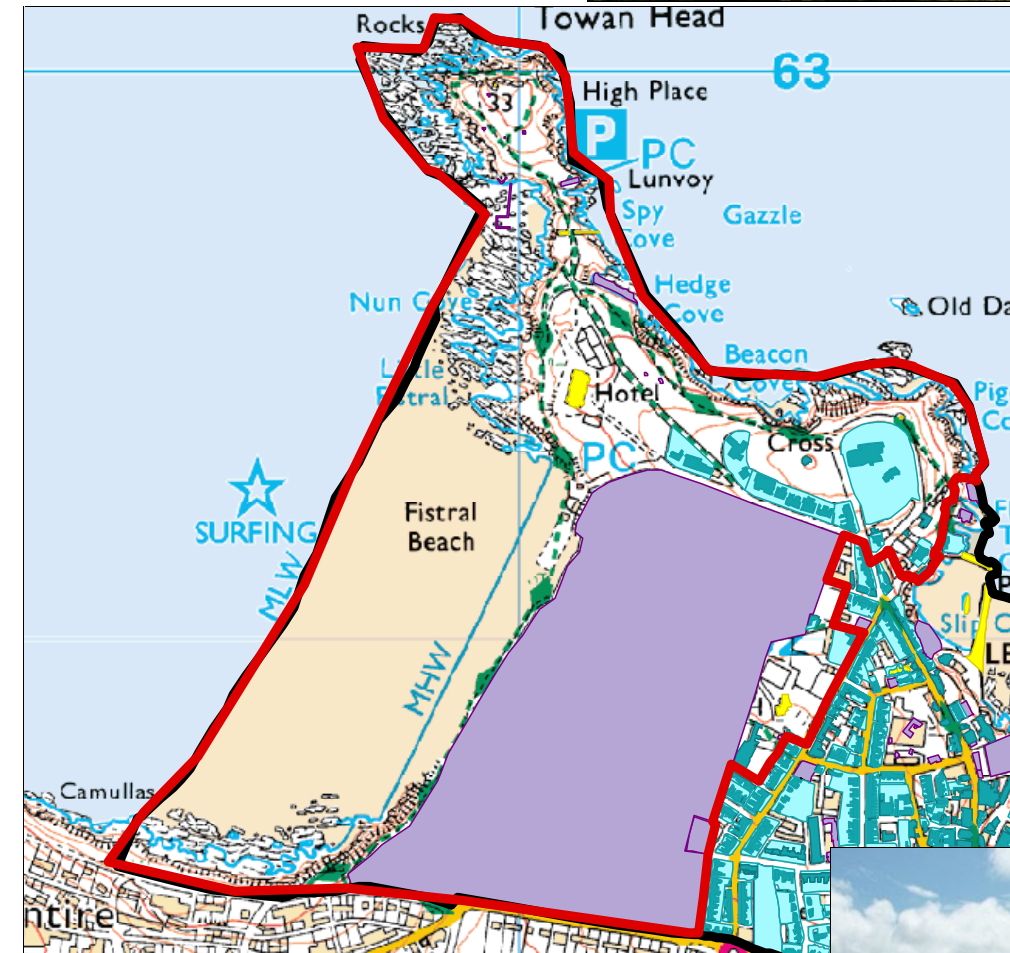
This sheet summarises the comprehensive assessments of character and regeneration opportunities in sections 5 and 6 of the report.

**Character summary**

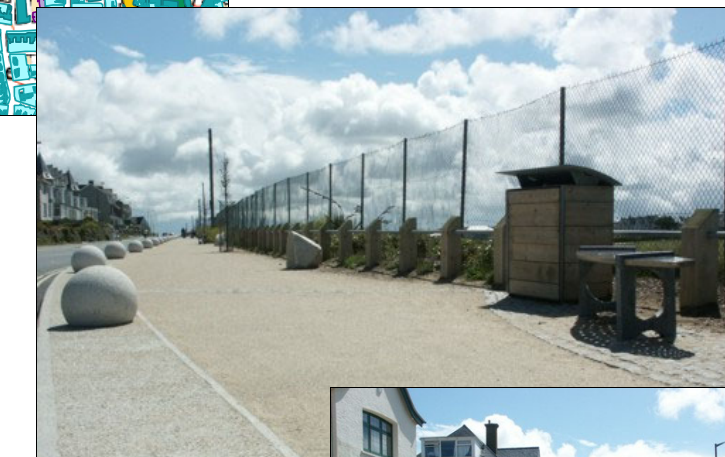
Towan Head and Fistral include some of the iconic landmarks, amenities and coastal landscapes that help define Newquay. The area is designed on the grand scale with expanses of open coastal land, landmark hotels, internationally renowned beaches, early golf links and large residential villas. It forms a key area in the distinctive interplay between the town's built environment and its spectacular natural setting.

**Regeneration opportunities**

- Recognise the quality of the surviving historic buildings and treat sympathetically
- Fistral beach improvements provide the exciting opportunity for an iconic 21<sup>st</sup> century building for the town.
- Conversion/redevelopment of the Westward Ho! Hotel
- Continue enhancement of the public realm



There are major improvements planned for Fistral beach – including the creation of a national surfing centre



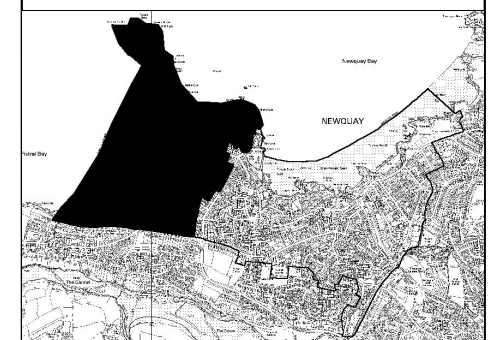
Some public realm enhancement has already been undertaken as part of the Newquay transportation strategy. There is potential for further improvements.



**Character area 8:**  
Towan head and Fistral Beach

**Key**

- Character Area boundary
- Scheduled Monument
- Listed Building
- Other Historic Building
- Historic Plot
- Other Historic Site



CCC licence No. LA076538. All material copyright (c) Cornwall County Council 2002.

Cornwall Archaeological Unit  
Historic Environment  
Cornwall County Council  
(01872) 323603  
cau@cornwall.gov.uk

