

## Character Area 2: Coinagehall Street

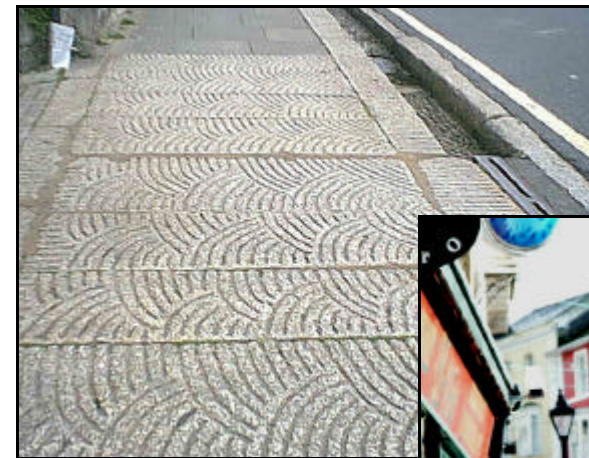
This sheet summarises the comprehensive assessments of character and regeneration opportunities in sections 5 and 6 of the report.

### Character summary

This area, historically the major axis of the planned medieval town, retains a sense of being the heart of the settlement. The topography of the former open market - its scale, the slight curve and marked slope of the street, together with the quality of many of the enclosing buildings - combine to create a striking urban space. There are memorable views along the street and out to open countryside.

### Regeneration opportunities

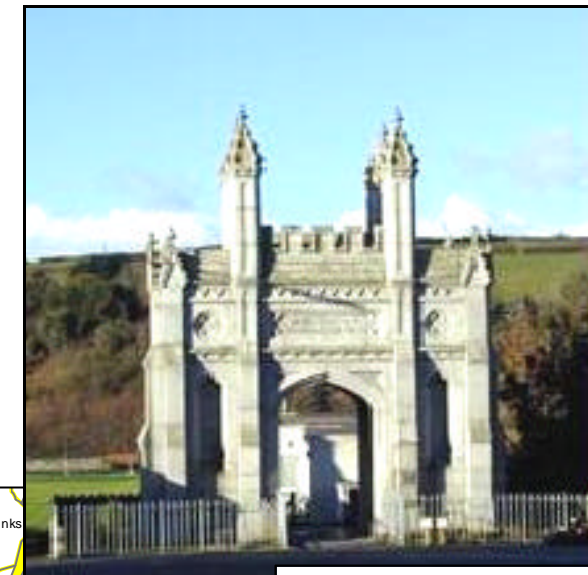
- Repair 'tears in urban fabric':
- medium-term potential for redevelopment of the Post Office with a contemporary building which will contribute to the character and distinctiveness of the area;
- Helston Arcade (22 Coinagehall Street) offers an opportunity for sensitive repair as part of a wider scheme.
- Identify and promote new uses for underused and vacant buildings, including those at the rear of plots.
- Opportunities to re-instate, repair or upgrade key elements of the streetscape (for example, railings, boundary walls and surfaces along opes, steps from former cattle market).
- Public realm improvements in the Bowling Green area reflecting the historic importance of the site.
- Review Conservation Area, potentially incorporating structures within the historic plots associated with listed buildings on the street frontages.
- Reduce vehicle - pedestrian conflict and traffic congestion



Distinctive fan scored granite paving in Coinagehall Street



The steeply-sloping Coinagehall Street – imposing buildings and vibrant colours.



The Grylls monument – focal point of views west along Coinagehall Street - and spectacular views to countryside.



The Bowling Green – an important historic site. Potential for substantial public realm improvements.



Helston Arcade – potential for a sensitive repair scheme, enhancing the streetscape and increasing occupancy and activity.



Methodist Chapel, Coinagehall Street: a landmark building. Potential to reinstate railings.

## CSUS: Helston

### Character area 2: Coinagehall Street

- Character Area boundary
- Scheduled Monument
- Listed Building
- Other historic building
- Other historic site

Based on the Ordnance Survey 1:10,000 and Landline mapping with the permission of the Controller of Her Majesty's Stationery Office (c) Crown Copyright. Unauthorised reproduction infringes Crown Copyright and may lead to prosecution or civil proceedings. CCC licence No. LA0765 38.

All material copyright (c) Cornwall County Council 2002.



Cornwall Archaeological Unit  
Historic Environment  
Cornwall County Council  
(01872) 323603  
cau@cornwall.gov.uk

