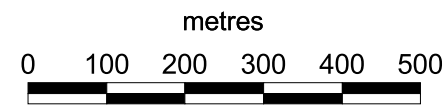
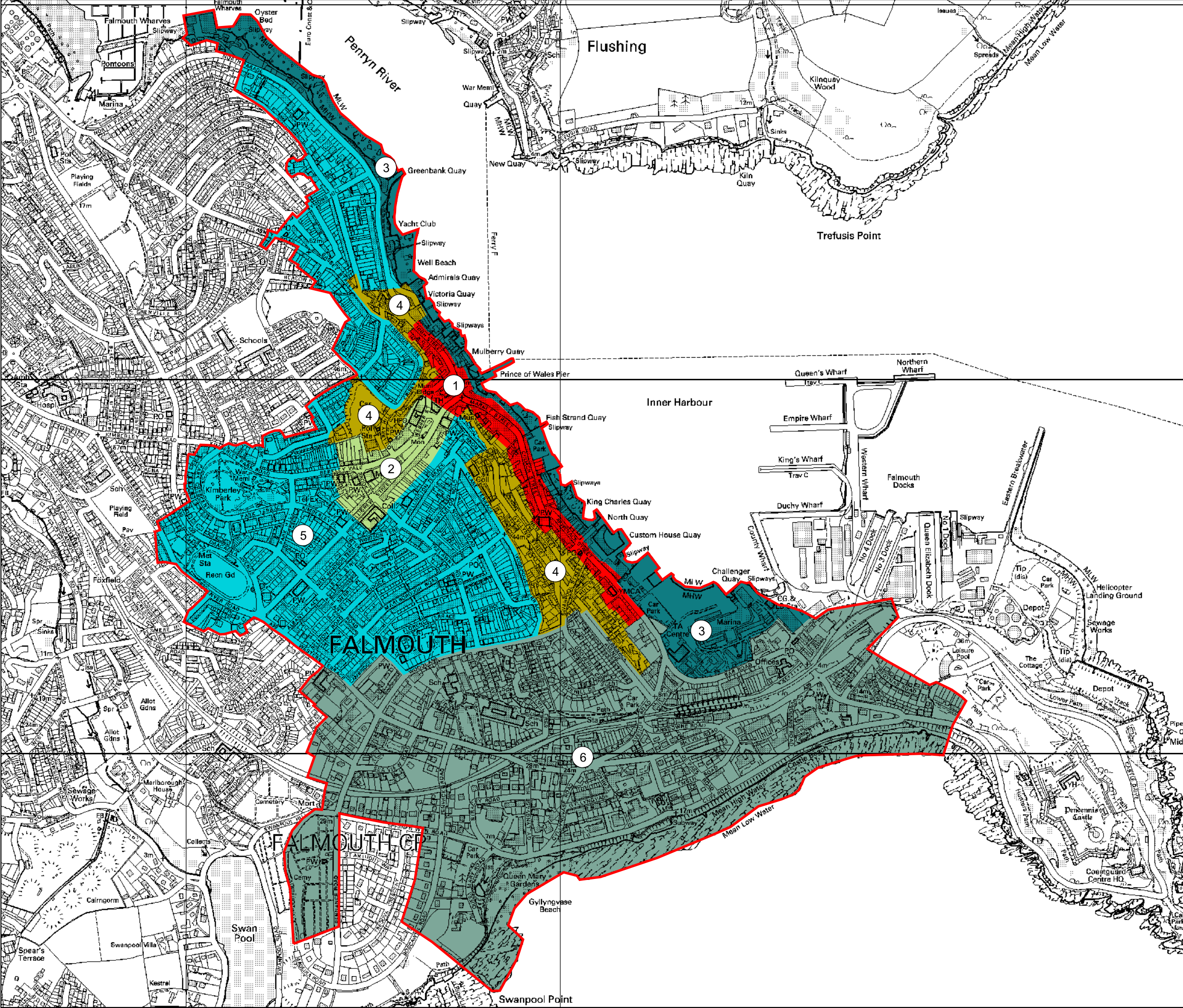


Figure 7. Character areas

Key

- Primary study area (c1907 urban extent)
- 1. Main commercial axis
- 2. The Moor
- 3. Waterfront
- 4. The Cliff
- 5. The terraced suburbs
- 6. Seaside resort and wooded suburbs



CCC licence No. 100019590, All material copyright (c) Cornwall County Council 2005

Historic Environment Service  
 Environment & Heritage  
 Cornwall County Council  
 (01872) 323603  
 hes@cornwall.gov.uk

