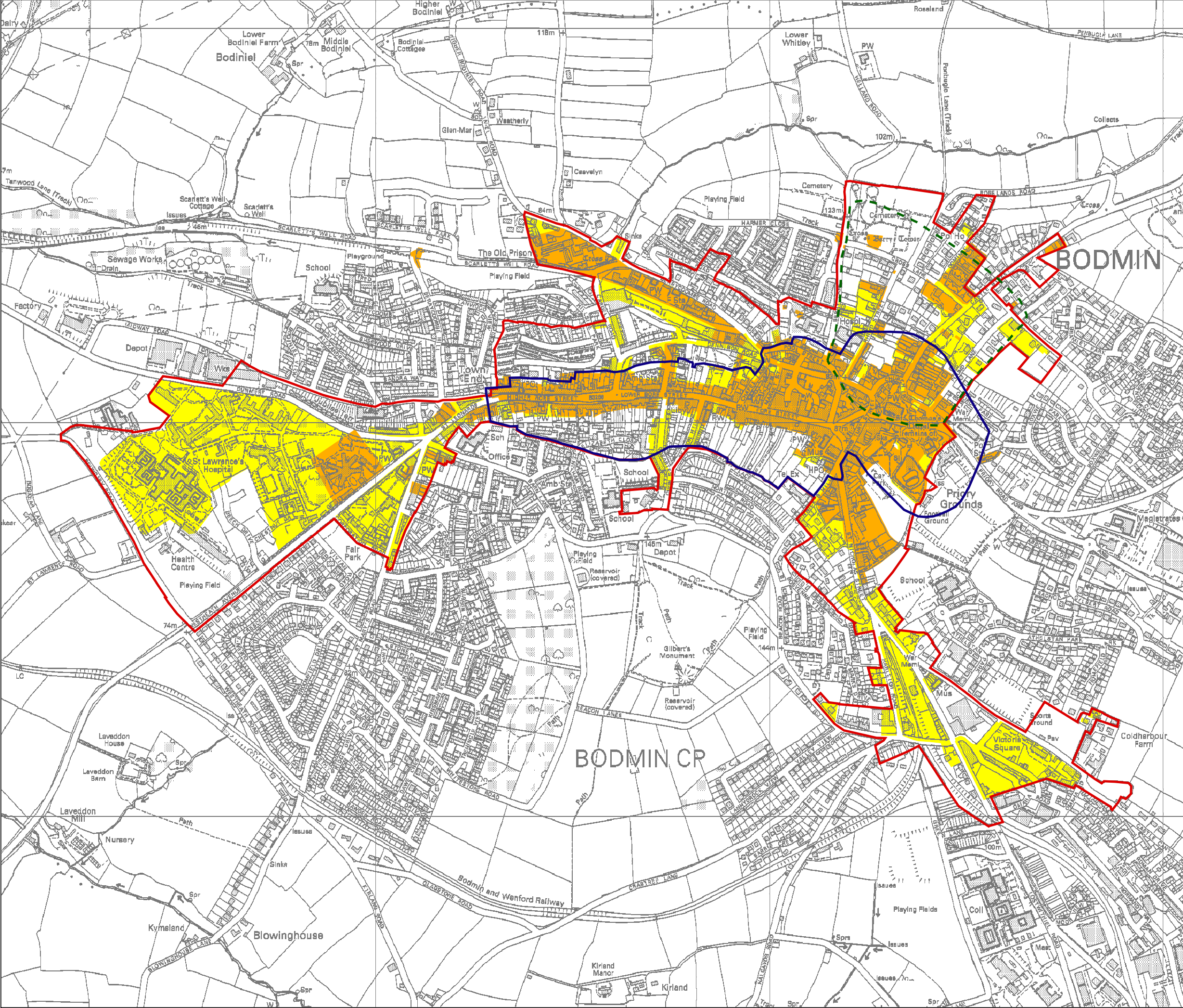


Figure 6.
Archaeological potential

Key

- Primary study area
- Possible extent of late Saxon town
- Approximate medieval extent (after Sheppard 1980)
- c1840 extent
- c1907 extent

A broad indication of archaeological potential is provided by the initial date of urban development. Archaeological remains in areas developed at an early date in Bodmin's growth are likely to be more complex than later deposits. (For additional discussion see Section 4.)



CCC licence No. 10019590. All material copyright (c) Cornwall County Council 2005.

Historic Environment Service
Environment & Heritage
Cornwall County Council
(01872) 323603
hes@cornwall.gov.uk

